



## Create and Maintain Datables for Creo Schematics

Quickly generate Creo® Schematics and Creo® Cabling compliant datatables for fibers, cables and connectors

### Easy Datable Creation

Virtual Interconnect’s DataTableCreator v2.0 allows you to quickly and easily produce Creo Schematics and Creo Cabling compliant datatables for fibers, cables and connectors, automatically creating sub tables and member maps for connectors and multi-level cables.

DataTableCreator allows you to easily generate a Global Properties file to simplify the import of datatables into Creo Schematics. You can also define your own properties and preset range values for each datatable category and store them for future retrieval and use.

### Benefits

Creating and maintaining datatables for Creo Schematics can take an excessive amount of your time and resource. Are you losing track of all your Creo Schematics datatables? Are your datatables full of errors and never right first time? Virtual Interconnect’s DataTableCreator v2.0 solves all these issues and more, allowing you to generate Creo Schematics and Creo Cabling compliant datatables first time, every time.

### DataTableNavigator

The integral DataTableNavigator allows you to open, edit, modify and save your current datatables using copy/paste and insert/delete functionality with full confidence that the result will be fully Creo Schematics and Creo Cabling compliant datatables. New columns and rows can be added and deleted and cells can be easily edited too.

### DataTableCreator Features and Functionality:

- Produce Creo Schematics and Creo Cabling compliant datatables
- Fully Routed Systems Designer and Pro/CABLING compliant as well
- Edit or modify current datatables, ensuring compatibility
- User defined properties for flexibility
- Generate sub-tables and member maps
- Operates independently of, or in conjunction with, Creo Schematics
- Generate Global Properties files for ease of import to Creo Schematics
- Properties and values can be stored in a Presets file.

Open	Available	Save Datable	Add Column	Add Row	Delete Column(s)	Delete Row(s)	Copy	Paste
1	01010101	0101	0101	0101	0101	0101	0101	0101
2	01010102	0102	0102	0102	0102	0102	0102	0102
3	01010103	0103	0103	0103	0103	0103	0103	0103
4	01010104	0104	0104	0104	0104	0104	0104	0104
5	01010105	0105	0105	0105	0105	0105	0105	0105
6	01010106	0106	0106	0106	0106	0106	0106	0106
7	01010107	0107	0107	0107	0107	0107	0107	0107
8	01010108	0108	0108	0108	0108	0108	0108	0108
9	01010109	0109	0109	0109	0109	0109	0109	0109
10	01010110	0110	0110	0110	0110	0110	0110	0110
11	01010111	0111	0111	0111	0111	0111	0111	0111
12	01010112	0112	0112	0112	0112	0112	0112	0112
13	01010113	0113	0113	0113	0113	0113	0113	0113
14	01010114	0114	0114	0114	0114	0114	0114	0114
15	01010115	0115	0115	0115	0115	0115	0115	0115

The integral DataTableNavigator allows you to open, edit, modify and save your datatables quickly and easily



# Create and Maintain DataTables for Creo Schematics

## Data Sheet



### System Requirements

- Operating System: Windows 2000 Service Pack 2 or later, Windows XP or later
- Licence: Pro/ENGINEER Routed Systems Designer 6.0 or later.

### SmartBytes

Virtual Interconnect offers a range of useful SmartBytes JAVA applications that offer additional functionality or automate repetitive tasks in Creo Schematics and Creo Cabling. As well as DataTableCreator, we also have TermTable to help with Automatic Design Rule Checking. TermTable and DataTableCreator are fully compatible.

### Customization

If DataTableCreator or our other SmartBytes don't quite meet your needs, talk to us about customization.

### Maintenance

Our maintenance contract ensures DataTableCreator stays up to date and is compatible with any new releases from PTC. It also allows you to benefit from any new functionality or usability improvements that we release.

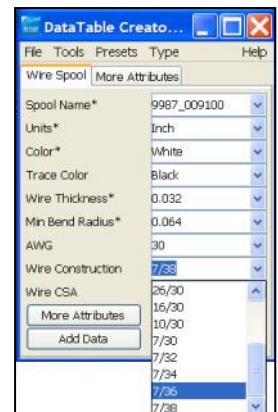
### Find out more

Contact us to talk about your specific needs or visit our web shop [www.virtual-interconnect-shop.com](http://www.virtual-interconnect-shop.com) to download data sheets and other information about DataTableCreator and our other SmartByte applications.

### How to buy

Visit our web shop

[www.virtual-interconnect-shop.com](http://www.virtual-interconnect-shop.com) or contact us to discuss your requirements.



DataTableCreator allows you to quickly and easily define your components' attributes



Virtual Interconnect Ltd  
The Hub, 70 Pacific Quay  
Glasgow, UK, G51 1DZ

t: +44 (0)141 530 5567  
e: [info@virtual-interconnect.co.uk](mailto:info@virtual-interconnect.co.uk)  
w: [www.virtual-interconnect.co.uk](http://www.virtual-interconnect.co.uk)  
[www.virtual-interconnect-shop.com](http://www.virtual-interconnect-shop.com)

*Leading the way in routed systems*

