



The free electrical simulator for Creo® Schematics

Simulate and validate designs quickly and accurately; improve efficiency and quality, save time and money

Electrical Simulator

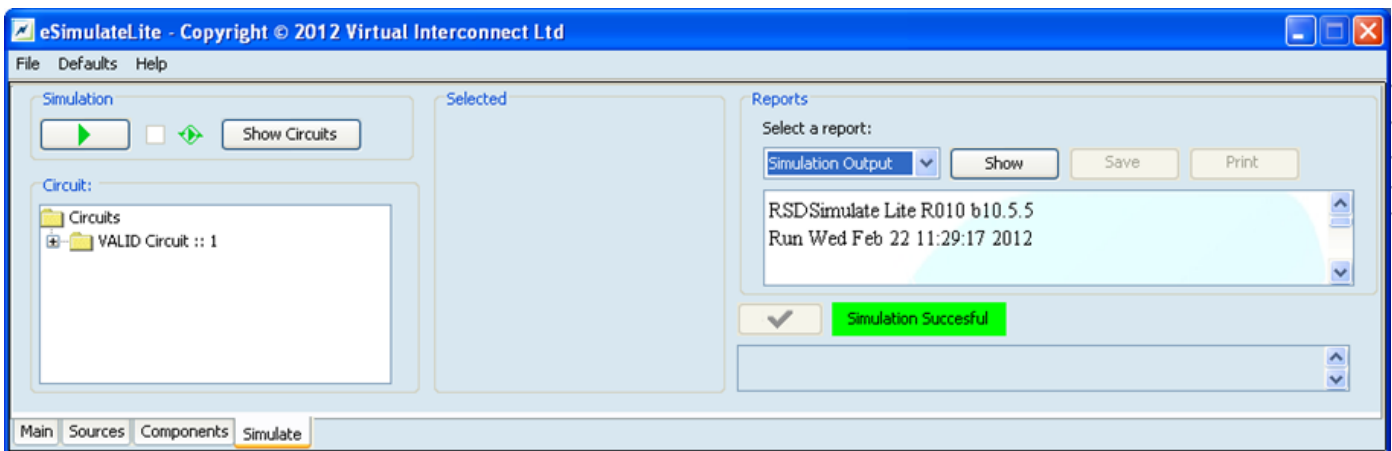
eSimulate^{Lite}, Virtual Interconnect's free electrical simulator for Creo® Schematics, gives electrical engineers a fast and accurate way to analyse electrical circuits. It is designed to allow engineers and designers to quickly and efficiently determine the optimum combination of components, terminals and wires, whatever they are designing. By providing useful information early in the design process and by minimizing the need for expensive prototypes, eSimulate^{Lite} simplifies the design process and saves time and money.

Benefits

eSimulate^{Lite} provides the electrical engineer with extremely valuable information, throughout the design process. Utilizing this information, designs can be iterated and improved, easily checked and validated, without the need for expensive prototypes or costly delays waiting for manufacture. eSimulate^{Lite} allows you to create a virtual prototype of your electrical wire harness, optimize its design and check for faults. Ultimately eSimulate^{Lite} saves time and money whilst improving efficiency and quality.

eSimulate^{Lite} Features:

- Fully Integrated with Creo Schematics
- SPICE-based electrical simulator
- Voltage margin analysis
- Automatic wire overload detection
- Automatic validation of design prior to simulation
- Flexible workflow
- What if scenarios
- Simulate existing designs
- Use your own libraries
- Multi-environmental analysis



eSimulate^{Lite} has a user-friendly interface that allows the engineer to quickly choose sources, components and fibers, create "What-if" scenarios and simulate results



The free electrical simulator for Creo Schematics

Data Sheet



Functionality and Capabilities

The tables below gives more details on the functionality and capabilities of eSimulate^{Lite}:

Analysis
Voltage margin
DC Voltage
What if scenarios

Reports
HTML Pop Up
Compare Reports

Design Rule Checking
Automatic wire overload detection
Automatic validation of design prior to simulation
Component Power Dissipation

Integration
Integrated with Creo Schematics
Circuit Analysis
Wiring Analysis
Utilize existing Libraries
Utilize existing designs

Platform Requirements

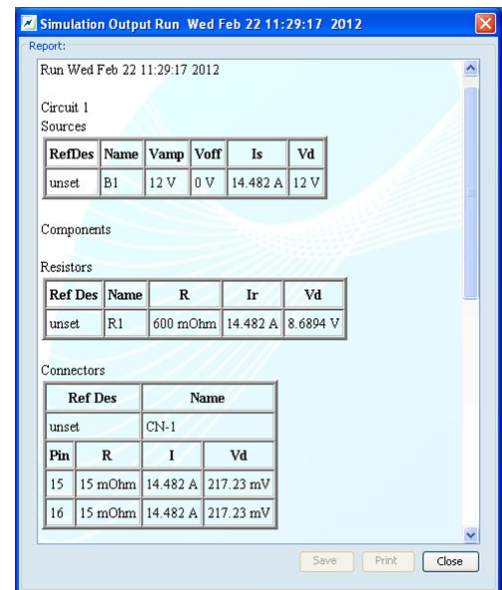
- Microsoft Windows XP (Home, Professional, x64) or
- Microsoft Windows Vista (Business, Ultimate, x64) or
- Microsoft Windows 7.

eSimulate

eSimulate^{Lite} is the free trial version of eSimulate. eSimulate offers a great deal more analysis, design rule checking and reporting functionality, as well as still being fully integrated with Creo Schematics.

Find out more

Contact us to find out more about eSimulate^{Lite} or the comprehensive functionality of eSimulate and to talk about your specific needs.



Comprehensive reports are available to help analyse your circuit.

How to download

Registered PTC maintenance paying users can visit the software download area of the PTC website www.ptc.com to download eSimulate^{Lite}—the free trial version of eSimulate.



Virtual Interconnect Ltd
The Hub, 70 Pacific Quay
Glasgow, UK, G51 1DZ

t: +44 (0)141 530 5567
e: info@virtual-interconnect.co.uk
w: www.virtual-interconnect.co.uk
www.virtual-interconnect-shop.com

Leading the way in routed systems



Pro/ENGINEERTM, Routed Systems DesignerTM, Creo[®] Schematics, Wildfire[®] and Pro/CABLINGTM are trademarks or registered trademarks of Parametric Technology Corporation or its subsidiaries in the USA and in other countries.